



2026 ADPCA Conference

15th – 19th, July 2026, Samothraki Village Hotel, Samothrace, Greece



Call for Submissions: Articles, Texts, and Visual Artworks

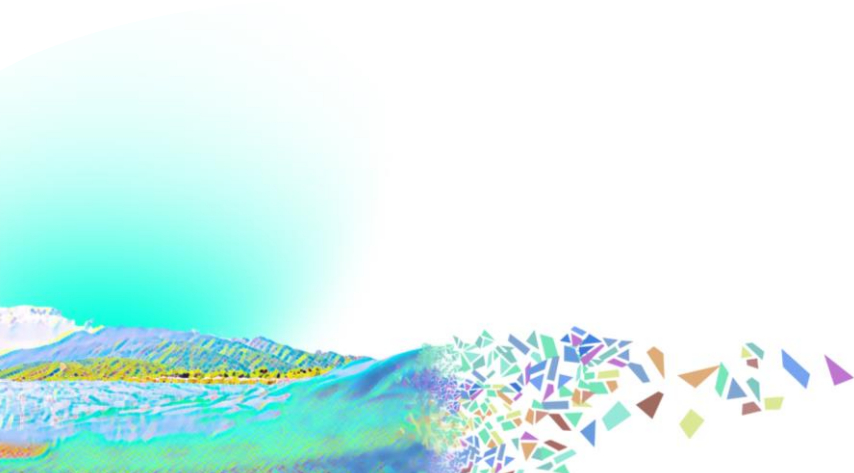
Within the framework of the **ADPCA World Conference 2026**, a parallel initiative is taking place, addressed to the international community of person-centered professionals and friends of the Person-Centered Approach. The **ADPCA** (Association for the Development of the Person-Centered Approach) invites you to submit **articles, theoretical or experiential texts, as well as artistic works**, for publication in a volume that will include the proceedings of the conference.

The aim of this initiative is to create a **living and polyphonic space of expression**, where scientific knowledge enters into dialogue with personal experience, and theory with practice, grounded in the core values of the Person-Centered Approach: empathy – authenticity – acceptance – relating.

-Thematic Focus

Submissions may be inspired by — but are not limited to — the following themes:

- The Person-Centered Approach in theory and practice.
- The therapeutic relationship and the importance of presence.
- Empathy, genuineness, and unconditional positive regard.
- Personal and professional development.
- The Person-Centered Approach and its various applications.
- The experience of *relating* and *belonging*.
- The connection between science, art, and human experience





I. Types of Submissions

The following types of submissions are welcome:

- **Scientific or theoretical articles**
- **Clinical or experiential reflections**
- **Essays / reflective texts**
- **Poems or literary texts**
- **Visual/artistic works**
- **Other creative contributions** that engage in dialogue with the person-centered philosophy

II. Submission Guidelines:

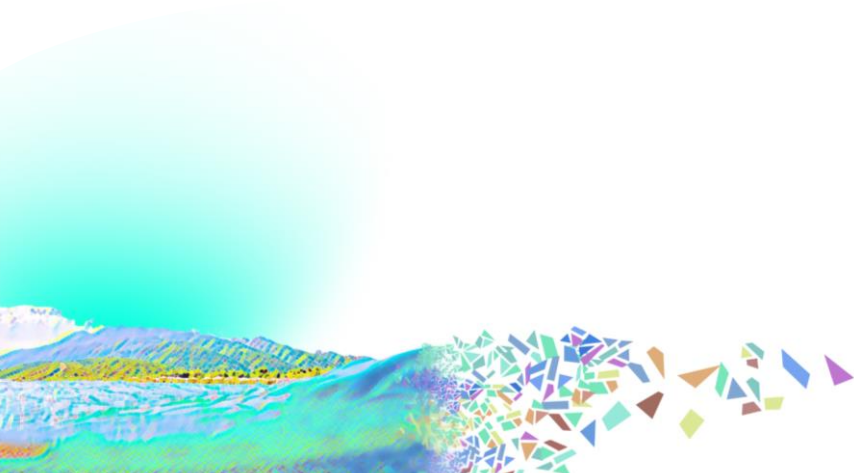
Interested contributors shall include the following:

General Requirements

- Title of the work
- Full name and a short biographical note (up to 100 words)
- Written submissions may be in English, Greek, or both languages.
- Further details depending on the type of submission can be found in the technical specifications below.

***Additional Information**

1. Submissions must be sent no later than the closing of the conference, **on July 19, 2026.**
2. In regard to article writing, contributors may also refer to published articles in the Person-Centered Journal (PCJ) of the ADPCA: <https://adpca.org/person-centered-journal-pcj/>
3. Selected articles from the submissions will be forwarded for possible publication in the international Person-Centered Journal (PCJ) of the ADPCA.





III. Technical Specifications

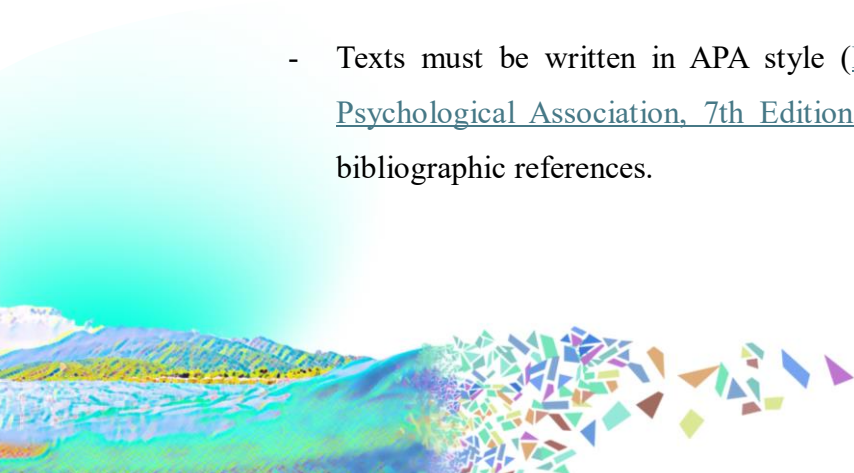
according to the type of submission**

1. Scientific or Theoretical Articles

- Manuscripts must be written in accordance with APA style ([Publication Manual of the American Psychological Association, 7th Edition, 2020](#)), including all required bibliographic references.
- Please include: An abstract of up to 250 words, a short biographical note, names of all authors, contact details of the corresponding author, institutional affiliation, where applicable, and five (5) keywords.
- The manuscript should not exceed 7,000 words, including references.
- Extended quotations (more than 300 words from a single source or more than two lines from a poetic text), as well as the inclusion of tables and figures from other sources, require written permission from the original authors. Authors are solely responsible for obtaining such permissions. A copy of the permission must be submitted to the Organizing Committee prior to confirmation of publication.
- In cases where the manuscript involves case studies or research, authors must submit a signed statement confirming that documented informed consent has been obtained from all participants. The handling of data, results, and their presentation is the sole responsibility of the author(s).
- Manuscripts should be submitted in one PDF file, and optionally also in Word format, to: conference2026@adpca.org .
- The review process will be conducted by members of the ADPCA 2026 Conference Organizing Committee.
- Submissions may be written in Greek, English, or both languages.

2. Clinical or Experiential Reflections

- Texts must be written in APA style ([Publication Manual of the American Psychological Association, 7th Edition, 2020](#)), and include the appropriate bibliographic references.





- Submissions in this category are typically shorter than a scientific article.
- Please include: an abstract of up to 250 words, a short biographical note, names of the author(s), contact details of the corresponding author, and institutional affiliation, where applicable.
- In cases where reference is made to other persons or situations, authors must ensure full anonymity and are responsible for the way relevant information is presented.
- Submissions should be sent in one PDF file, and optionally also in Word format, to: conference2026@adpca.org .

3. Essays / Reflective Texts

- For organizational purposes, manuscripts are recommended to be formatted in Times New Roman, font size 12, 1.5 line spacing.
- Please include: author's full name, a short biographical note.
- The text should not exceed 5,000 words, including references.
- Submissions should be sent in one PDF file, and optionally also in Word format, to: conference2026@adpca.org .

4. Poems or Literary Texts

- Please include: author's full name, a short biographical note.
- The text should not exceed 15 pages.
- Submissions should be sent in one PDF file, and optionally also in Word format, to: conference2026@adpca.org .

5. Visual Artworks

- Artist's full name and a short biographical note.
- A brief description of the artwork and its relationship to the Person-Centered Approach (up to 250 words).





- 1–4 images of the artwork (landscape or portrait orientation), in the highest possible resolution, to be presented either together with an accompanying text or solely with the short description and title.
- Optionally, contributors may include an additional reflective text by the artist, commenting on the artwork and its theme (up to 350 words).
- Works from any artistic medium are accepted (indicatively: painting, photography, sculpture, installation, video, performance, etc.), provided they can be documented through images suitable for inclusion in the volume.
- External links cannot be included.
- Artists must accompany their submission with a signed declaration stating that no intellectual property rights are violated.

6. Other Creative Approaches in Dialogue with the Person-Centered Philosophy

- Submissions must be in a form that can be represented within the volume, preferably in textual format.
- A brief description of the approach is required.
- Please include: author's full name, a short biographical note.
- For further clarification, contributors may contact the Organizing Committee at: conference2026@adpca.org .

